

## Metal roof mounting



### System introduction

Metal roof mounting is an universal system for metal pitched roofs. It could be used for commercial and residential roof solar system. We have developed many kinds of clamps for different metal shape roofs. We finished maximum pre-assembly in factory to ensure significant labor saving for customers. Accurate designing and pre-installation eliminates cutting in project place, and make the fastest installation possible. High quality metal material and subsequent process make the mounting system for long time anticorrosive. Static calculation and test will ensure our promise to customers, stable and reliable.

### Technical Data

Installation site: Metal pitched roof  
 Tile angle: 5-60 degree  
 PV modules: framed or unframed  
 Module layout : Vertical or horizontal  
 Max wind speed: 45m/s  
 Material: Alu 6005 T5 & SUS304  
 Color: Natural or customized  
 Standards: Eurocode 1, DIN 1055, AS/NZS 1170  
 Warranty: 12 years warranty

### Component List



Chikok III



Wave Clamp



Carrol 406 Clamp



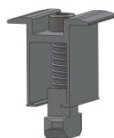
Carrol 700 Clamp



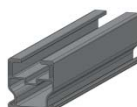
Buttlar Clamp



Side  
Clamp



Middle  
Clamp



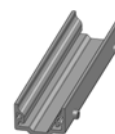
Rail 40\*40



Thinfilmm Side  
Clamp



Thinfilmm Middle  
Clamp



Rail 40\*40  
Splice